



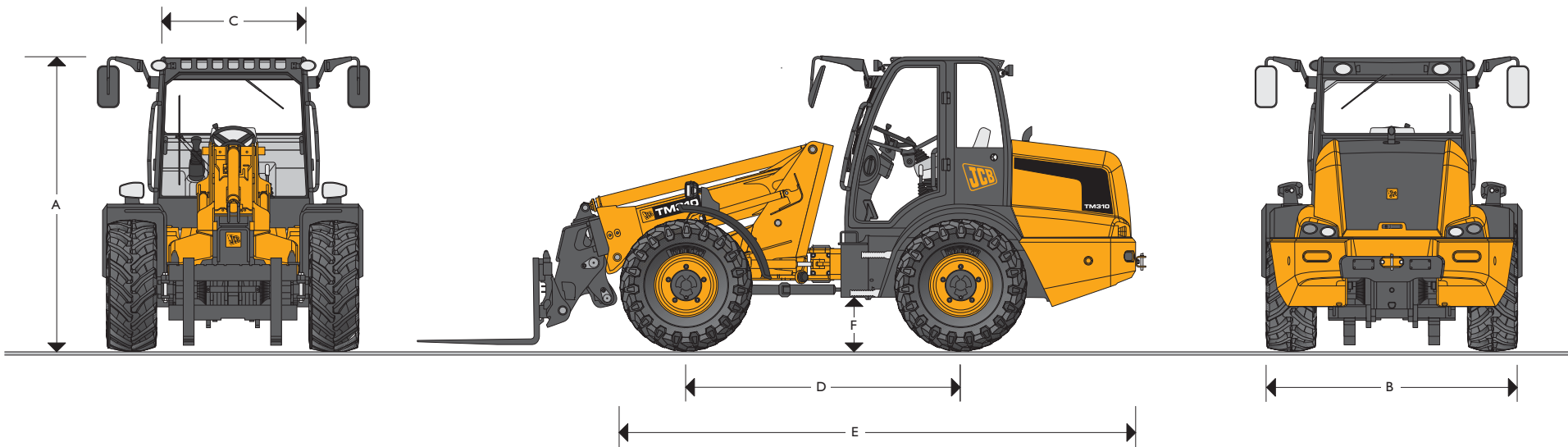
JCB FARM MASTER LOADER | TM310/TM310S



MAX. ENGINE POWER: 97kW 130hp / 108kW 145hp

MAX. PAYLOAD: 3100kg (6832lb)

MAX. LIFT HEIGHT: 5200mm (17ft 1in)



STATIC DIMENSIONS

| Machine model | TM310/TM310S |
|---------------------------------|-------------------|
| | mm (ft-in) |
| A Overall height | 2695 (8-10) |
| B Overall width (over tyres)* | 2344 (7-8) |
| C Inside width of cab | 1267 (4-2) |
| D Wheelbase | 2500 (8-2) |
| E Overall length to front tyres | 4715 (15-6) |
| F Ground clearance | 444 (1-5) |

*Dependant upon tyre specification.

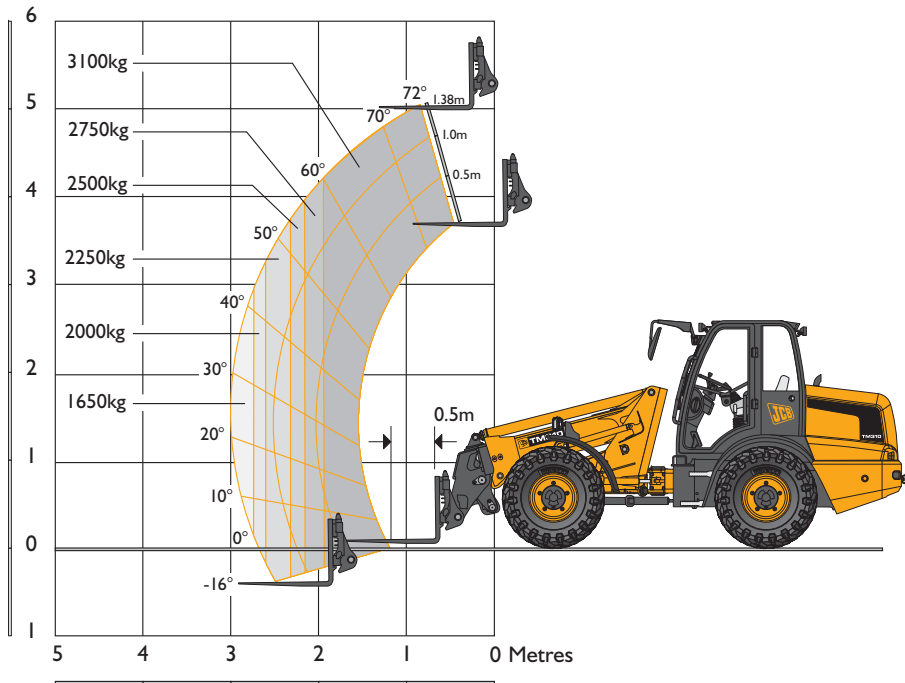
| Machine model | TM310/TM310S |
|----------------------------------|------------------------|
| Articulation angle | degrees ± 43° |
| Outside turn radius (over tyres) | mm (ft-in) 4382 (14-3) |
| Departure angle | degrees 28 |
| Weight | kg (lb) 8000 (17637) |
| Tyres | XMCL 460/70 |



JCB FARM MASTER LOADER | TM310/TM310S



LIFT PERFORMANCE – TM310



LOADER PERFORMANCE

| Machine Model | | TM310 & TM310S |
|------------------------------|-----------|----------------|
| Max lift capacity | kg (lb) | 3100 (6834) |
| Lift capacity to full height | kg (lb) | 3100 (6834) |
| Lift capacity at full reach | kg (lb) | 1650 (3638) |
| Lift height | m (ft-in) | 5.2 (17-0) |
| Reach at maximum lift height | m (ft-in) | 1.38 (4-6) |
| Maximum forward reach | m (ft-in) | 3.0 (9-10) |
| Reach with 1 tonne load | m (ft-in) | 3.0 (9-10) |

ENGINE

| Machine Model | | TM310 | TM310S |
|----------------------|------------------------|----------------------------|-----------|
| Manufacturer | | JCB | |
| Model | | Dieselmax | |
| Displacement | ltr (in ³) | 4.4 (269) | |
| No. of cylinders | | 4 | |
| Bore size | mm | 103 | |
| Stroke | mm | 132 | |
| Aspiration | | Turbocharged/charge cooled | |
| Power rating | | | |
| Power @ 2200rpm | kW (HP) | 97(130) | 108 (145) |
| Torque rating | | | |
| Torque @ 1500rpm | Nm(lbf ft) | 532 (392) | 550 (406) |

TRANSMISSION

JCB 6 speed transmission incorporating torque converter; 6 speed powershift gearbox with torque lockup in 5th and 6th. 3 operating modes: Eco, Power and Field. Travel speed 40kph (25mph). Transmission kick down.

A combined steering column switch incorporates direction control and 6 forward and 4 reverse powershift gears with auto-select between 4th and 6th in Eco and 3rd and 6th in powershift, direction control also on joystick.

Front and rear drive axles: JCB epicyclic hub reduction drive/axles with Max-Trac torque proportioning differentials.

Permanent 4 wheel drive

BRAKES

Service Brake: Power assisted hydraulic activated, self adjusted, oil immersed in board multi disc front axle brake. Providing braking on all wheels.

Parking Brake: Hand operated disc brake on output shaft of gearbox mounted internally.



JCB FARM MASTER LOADER | TM310/TM310S



BOOM AND CARRIAGE

Boom is manufactured from high tensile steel. Low maintenance, hard wearing pads. One boom end auxiliary hydraulic service fitted as standard.

Pin & cone carriage fitted as standard.

SAFETY CHECK VALVES

Fitted to carriage tilt; telescopic and boom lift rams.

SERVICE CAPACITIES

| | | |
|-----------------------|-----------------|------------|
| Fuel Tank | litres (UK gal) | 160 (35) |
| Hydraulic tank | litres (UK gal) | 97 (21) |
| Hydraulic system | litres (UK gal) | 135 (29.7) |
| Engine coolant system | litres (UK gal) | 25 (5.5) |

HYDRAULICS

| | | |
|------------------------------|-----------|----------------------|
| Pump type | | Variflow piston pump |
| Pump max flow @ 2200rpm | l/min | 140 |
| Pump max pressure | bar (psi) | 230 (3336) |
| Hydraulic cycle times | | Seconds |
| Boom raise | | 6.0 |
| Boom lower | | 4.4 |
| Extend | | 4.0 |
| Retract | | 2.6 |
| Bucket dump | | 2.6 |
| Bucket crowd | | 3.0 |

Proportional auxiliary control operated by joystick with constant flow setting.

ELECTRICS

System voltage – 12V. Alternator output– 120Ah. Battery capacity – 98Ah. Full roading lighting. Reversing light. Direction indicators. Front Worklights (2 off). Rear Worklights (2 off). Battery Isolator.

STANDARD EQUIPMENT

Bodywork: Recovery hitch, Propshaft guard, Plastic front fenders.

Cab: Rear centrally mounted ROPS and FOPS safety structure. Fully adjustable mechanical suspension seat. Adjustable steering column. Full digital instrumentation including engine & transmission temperature, fuel and speedo. Audible /visual warning panel. Tinted laminated safety glass. Front & rear screen wash/wipe. 3 speed heater with replaceable air filter. LH & RH opening doors. Adjustable single lever hydraulic boom control console. Column mounted single lever transmission selector. Combination stalk controls for lights, wipers, horn, direction indicators. Separate side console for auxiliary switches. Cigar lighter, ashtray, interior light, external rear view mirrors and fire extinguisher as standard. Front screen roller blind, top screen roller blind, interior mirror, standard exterior mirrors, Reverse alarm.

Steering: 43° articulation steering with double acting hydrostatic system. Priority steer valve. Emergency steering via internal hydraulic system in case of power failure.

OPTIONS AND ACCESSORIES

Limited slip differential axles front/rear; Air conditioning; Smooth ride system; Q-fit Carriage; air suspension seat, additional front & rear working lights; loader boom light; twin reverse light kit; biodegradable oil; sliding door window (LH & RH); quickhitch isolator; hydraulic tow hitch with electrics and hydraulic rear auxiliaries, top screen guard, tooth guard rotating beacon, exterior deluxe mirror, Attachments: Contact your local dealer for comprehensive range.

Wheels and tyres:

Michelin XMCL 460/70 R24
 Michelin XMCL 500/70 R24
 Goodyear IT520 460/70 R24
 Goodyear IT520 500/70 R24
 Goodyear 15.5/80 24 10 PLY

WASTEMASTER EQUIPMENT (TM310 WM)

Standard: Engine sump drain, propshaft guard, battery isolator, rear Worklights, front Worklights, full Wastemaster branding, widewire cooler, cyclonic air filter, plastic front fender with light guards (excluding Germany), recovery hitch, front and roof screen guards, front and roof screen roller blinds, rear chassis belly plate, fire extinguisher, interior mirror, front chassis cover plate, 3 speed powershift gearbox (limited to 20kph), reverse alarm, air conditioning.

Optional: Limited slip differential axles, choice of Pin & Cone or JCB Q-Fit hydraulic quickhitch, no front road light kits, steel front fenders with light guards (excluding Germany), rotating beacon, additional front and rear worklights, boom worklights, reverse and fog lights (Standard UK & Italy), twin reverse lights, toothguard, sliding door glass, air suspension seat, Extending mirrors, front chassis protective front bumper, choice of Towhitch options, biodegradable hydraulic oil, Attachments- Contact your local dealer.

Wheels and tyres:

406A140 Michelin 15.5 R25 XHA
 406A143 Michelin 12 R24 XMine D2
 406A144 Michelin 12 R24 XSM D2+
 406A145 Michelin 15.5 R25 XTLA
 406A146 Goodyear 500/70 R24 IT530



A GLOBAL COMMITMENT TO QUALITY

JCB's total commitment to its products and customers has helped it grow from a one-man business into Britain's largest privately owned manufacturer of backhoe loaders, crawler excavators, wheeled excavators, telescopic handlers, wheeled loaders, dump trucks, rough terrain fork lifts, industrial fork lifts, mini/midi excavators, skid steer loaders and tractors.

By making constant and massive investments in the latest production technology, the JCB factories have become some of the most advanced in Europe.

By leading the field in innovative research and design, extensive testing and stringent quality control, JCB machines have become renowned all over the world for performance, value and reliability.

And with a global sales and service network of over 400 distributors and agents, the company exports over 70% of its production to all five continents.

Through setting the standards by which others are judged, JCB has become one of Britain's most impressive success stories.

